

Lord I'm sinking

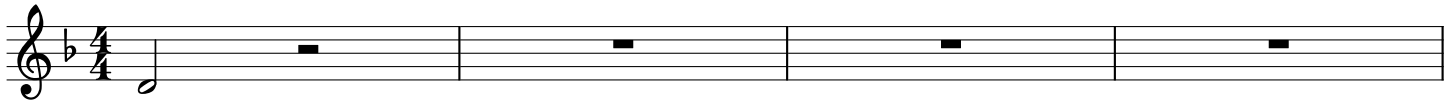
Tim Fairbairn

♩ = 80
Intro
Dm

B♭

F

C



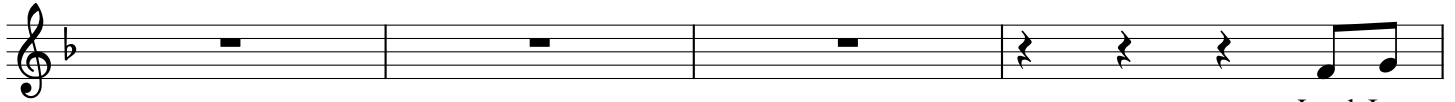
5

Dm

B♭

F

C



Lord I;m
Lord I'm

9

Verse
Dm

B♭

F

C



sink - ing the waves are crash - ing ov er me I can not breathe I went to
stumb - ling in the dark - ness fear sur - rounds I strain to see The night is

13

Dm

B♭

F

C



far Lord from your safe - ty al my ways seemed good to me But
dark Lord withot your pre - sence pres-sing down smot - the-ring me

17

B♭

C 3

Dm

B♭

C

F



let not my sor - row to pi - ty lead nor wal - low in my shame

21

B♭

C

F

Dm

B♭

C

Chorus
F



Stir my heart to turn to you and from by stub born ways I re -

25

B♭

F

C

Dm

F



pent I turn to you I crave your clean - sing power Lord I long to be

30

B♭

F

B♭

C

F



new a - gain Loved se - cure and home